

EVO Max 4N

See the Unseen

The Max 4N combines best-in-class night time starlight vision camera with the advanced capabilities of the Max series UAV platform for advanced nighttime operations.



No Blind Spots



Superior Anti-Interference Capability



High-Precision Visual Navigation



A-Mesh Networking



Starlight Vision Camera



5 km Night Vision Reconnaissance



AI Target Recognition



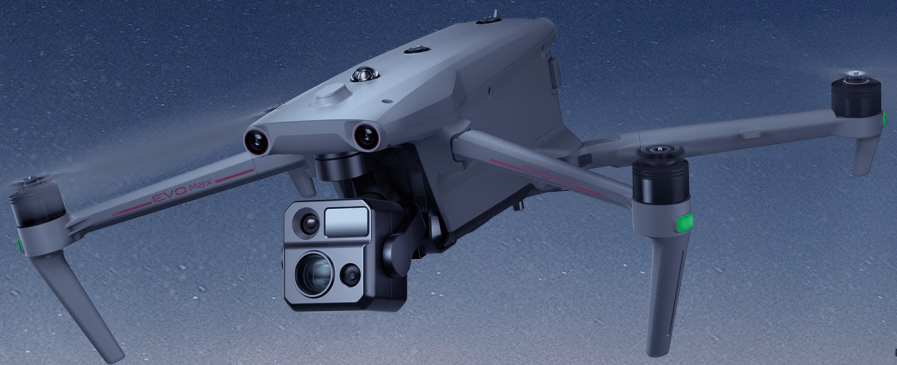
Hot-Swappable Battery



15 km Transmission Range



42 min Max. Flight Time



Fusion 4N | Explore the Night

Thermal Camera

640 × 512
Focal Length: 9.1 mm
16x Digital Zoom
Range: -4 °F to 1022 °F

Laser Rangefinder

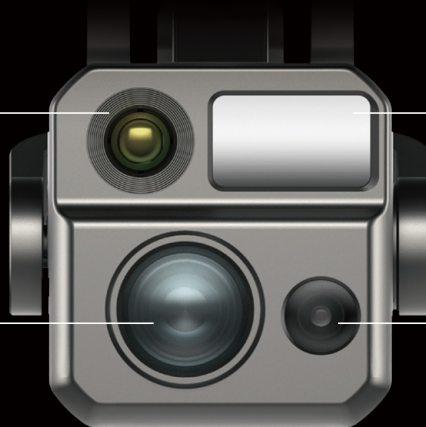
Measuring Range: 16.4–3737 ft
Measurement Accuracy: ± (1 m + D×0.15%)
*D = measurement distance

Starlight Vision Camera

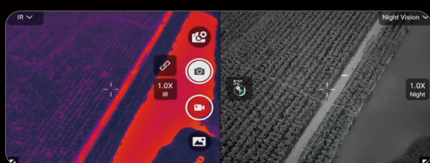
2.3 MP
LUX: 0.0001
IOS: 440000
Equivalent: 41.4 mm

Wide-Angle Camera

50 MP
1" CMOS
Aperture: F1.9
Equivalent: 23 mm



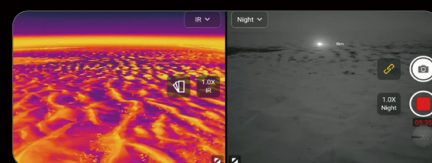
Unlock New Night Time Capability



The EVO Max 4N is equipped with an Starlight Vision Camera, which is not restricted by lighting conditions or temperature differences.



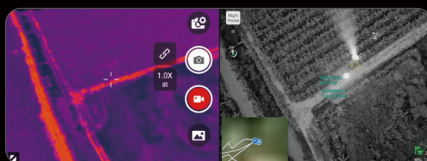
The EVO Max 4N enables observation through glass obstructions, making features of targets inside vehicles or buildings distinctly visible.



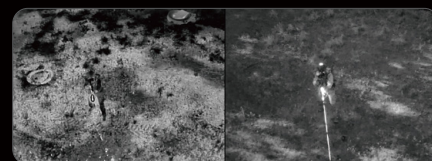
The EVO Max 4N can effortlessly detect light sources like cellphones or car lights 5km* or more in dark and open environments, enabling long-range and covert aerial reconnaissance.



Compared to infrared or laser illumination-based night vision reconnaissance solutions, the EVO Max 4N offers greater reconnaissance range and enhanced stealth, significantly reducing the risk of detection and counter-surveillance.



When ground team members wear night vision goggles, they can utilize laser signals projected by the UAV's laser rangefinder to pinpoint marked locations, enabling precise target positioning and effectively enhancing communication.

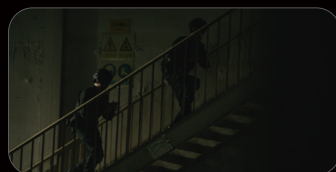


In public safety scenarios, beacons and laser pointers can serve as target markers, helping UAVs efficiently identify team members and improve positioning accuracy.

Applications



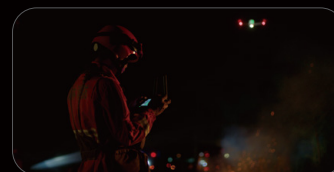
Law Enforcement



Security Patrol



Emergency Search & Rescue



Firefighting & Rescue

Specifications

Weight	V1: 1665 g (ABX40 smart battery, gimbal, and propellers included) V2: 1700 g (ABX41-D smart battery, gimbal, and propellers included)
Dimensions	V1: 563×650×150 mm (unfolded, incl. propellers) V2: 563×657×147 mm (unfolded, incl. propellers)
Maximum Flight Time	42 min
Maximum Range	25 km

Maximum Horizontal Flight Speed	23 m/s
Maximum Wind Speed Resistance	12 m/s
Operating Frequency	900MHz / 2.4GHz / 5.2GHz / 5.8GHz
IP Rating	IP43 (*Custom service)
Maximum Transmission Distance	15 km
GNSS	GPS / GLONASS / Galileo / BDS



@Autel Robotics



marketing@autelrobotics.com